

Board members 2016-2019 / short biographies

Dr. Viv Golding (UK) - Chairperson



Program Director Learning and Visitor Studies
Senior Lecturer, School of Museum Studies University of Leicester
Leicester, UK. E: Vmg4@le.ac.uk

Dr Viv Golding is Senior Lecturer and Programme Director of Learning and Visitor Studies at the School of Museum Studies, University of Leicester. Prior to joining the University of Leicester (UoL) in 2002 Dr Golding had a varied professional career in London, organizing art and design courses for further education students (1980-1992) and formal education provision at the Horniman Museum (1992-2002). She is widely funded to speak internationally on her research interests, most recently by the Japan Society for the Promotion of Science (JSPS 2011-12; 2014-2015) and the Arts and Humanities Research Council (AHRC 2011-2013). Her recent publications include: Fromm, A., Golding, V. and Rekdal, P. 2014 (eds) *Museums and Truth*, CSP; Golding, V. and Modest, W. 2013 (eds) *Museums and Communities: Curators, Collections, Collaboration*, Berg; Golding, V. 2009, *Learning at the Museum Frontiers: Identity, Race and Power* Ashgate. Further details can be found at: <http://www.le.ac.uk/ms/contactus/vivgolding.html>

Sylvia Wackernagel (Germany) - Secretary



Museum Learning Officer, Silesian Museum of Görlitz, Germany.
E: sylvia.wackernagel@gmail.com

I spent one year in Ecuador volunteering in social projects with children at risk. From 2003 on I studied Social Anthropology, Spanish and Peace & Conflict Studies at the Philipp University of Marburg (Germany) where I graduated in 2008. My research topic was about the relationship between contemporary tourism and Wendat cultural expressions in Quebec/Canada. One of my most inspiring internships was for the Rautenstrauch-Joest Museum in Cologne. Since 2009 I have been working in the museum sector: I was Research Assistant at the Museum of Ethnography in Dresden and continued for the Dresden State Art Collections. My work areas were the North American ethnographic collections and museum learning and communication. In 2012 I became Museum Learning Officer at the GRASSI Museum of Ethnography in Leipzig. During a short work stay organized by the ICOM Triennial in Rio de Janeiro I was very grateful to share experiences at the Favela Museum. Taking part in the Asian-European Museum Educator's exchange with a colleague from the National Folk Museum of Korea also was of very high professional significance. In April 2015 I was appointed Museum Learning & Outreach Officer at the Silesian Museum of Görlitz. The museum's location in the Polish-Czech-German borderlands is shaping my work tremendously. I'm planning to finish my Master's in Museum Practice and Management in 2017. What will be next?

Dr. Ulf Dahre (Sweden) - Treasurer



Associate Professor of Social Anthropology, Lund University Lund, Sweden.
E: ulf.johansson_dahre@soc.lu.se

Associate prof. Social Anthropology, Department of Social Anthropology, Lund University, Sweden. Former head of the Ethnographic Collections, The National Museum, Copenhagen, Denmark. Currently doing anthropological research in different areas. I am also teaching in social anthropology and in human rights. Current research areas: The Future of Ethnographic Museums (Just published an anthology, in Swedish, Danish and Norwegian, concerning the Nordic Ethnographic museums. Published at Aarhus University Press, 2015) The ReEmergence of Cabinet of Curiosities. Just got a larger research grant for this project, 201719. Indigenous peoples. My main field here is Hawaii and the Native Hawaiian Sovereignty Movement. The Challenges to Freedom of Expression. Water Stress in India (Bihar and Rajasthan)

Mario Buletić (Croatia) - Webmaster



Senior curator, Ethnographic Museum of Istria, Croatia. PhD candidate at University of Ljubljana, Slovenia.
E: mario@emi.hr

Mario Buletić graduated from Università degli Studi di Padova (Italy) in 2004 with a degree in Ethnology. He completed the Official Master Degree in Ethnographic Research, Anthropological Theory and Intercultural Relations at the Universidad Autónoma de Barcelona in 2007. Since 2009 works as museum curator in Ethnographic Museum of Istria. Year after he joined ICME committee. Currently, he is a PhD candidate in Cultural and Social Anthropology at the Ljubljana University.

Dr. Jennifer Anne Walklate (UK) - Newsletter Editor



Editor, Museums and Society; School of Museum Studies, University of Leicester.
E: jenny.walklate@gmail.com

Dr Jenny Walklate holds an MA in Museum Studies from the University of Leicester, and was the first recipient at that School of the AHRC funded Block Grant Partnership to study for her PhD, which she completed in 2013. She has extensive practice experience in the heritage and museums sector, having worked in care of collections at the Royal Shakespeare Company, with whom she exhibited costume at Warwick Castle, and as an installation technician during the redesign of the Ashmolean Museum in Oxford. She has coedited two books, *The Thing About Museums* and *narrating Objects, Collecting Stories*, and has published in a variety of peer reviewed journals. She was the Treasurer for the Museum Ethnographers Group (MEG) from 2012-2015, and has worked with them on two Arts Council England funded projects, *Engaging Curators* and *Making outcomes accessible: reaching and revitalizing the museum ethnography community*. As well as being newsletter editor for the International Committee for Museum Ethnography (ICME), she is a managing editor for the international journal, *Museum and Society* and volunteers for the Best in Heritage Awards.

Martin Earring (USA)



Special Assistant, National Museum of the American Indian, Smithsonian Institution. Tribe: Cheyenne River Sioux Tribe.
E: EarringM@si.edu

Mr. Earring is an enrolled member of the Cheyenne River Sioux Tribe in Eagle Butte, South Dakota, USA. He has BAs in Anthropology and French Studies from the University of South Dakota, USA and a MA in Liberal Studies from Dartmouth College, USA. Mr. Earring has been a member of ICME since 2009. In 2010 and 2011, he was awarded the ICME young museum professional travel grants. Mr. Earring has been an ICME board member since 2013 (Term 2). He was a founding member of The Federation of International Human Rights Museums from 2010-2013. Mr. Earring remains active with his tribes as he serves as a museum collections consultant for a visitor center located on the Pine Ridge Indian Reservation in Kyle, SD.

Dr. Laurie Beth Kalb Cosmo (Italy)



Art History Faculty, Temple University Rome; Research Associate, Peabody Museum of Archaeology and Ethnology, Harvard University.
E: lauriecosmo@gmail.com

Laurie Kalb Cosmo is a scholar and curator working in Italy and the United States. A professor of art history and Museum Studies at Temple University Rome since 2008, Dr. Kalb has been the recipient of Fulbright and other international consultancies and grants. Her research focuses on the history of museums in their birthplace of Europe and most recently on a Fascist-era world's fair complex in Rome. In Italy, she worked with ICCROM and the Ministry of Fine Arts and in the US at many museums, including Museum of International Folk Art, Craft and Folk Art Museum Los Angeles, Autry Museum of the American West, New England Folklife Center, Museum of Fine Arts, Boston, and Peabody Essex Museum. A Research Associate at Harvard's Peabody Museum of Archaeology and Ethnology, Kalb recently submitted a book manuscript on the Alfred Kidder Collection of Southwest Pottery. Dr. Kalb holds a Ph.D. and M.A. in Folklore from University of Pennsylvania and B.A. in Anthropology from Vassar College. In her second term as ICME board member, she wishes to focus on best museum practices and progress ICME's embrace of all museums that deal in ethnography—open air, eco, and fine art, community organizations and cultural heritage sites, and expand ICME's network more evenly around the globe.

Agnes Aljas (Estonia)



Research Secretary, Estonian National Museum PhD Student and Assistant in Memory Institutions, University of Tartu.
E: agnesaljas@gmail.com

Agnes Aljas is a research secretary of Estonian National Museum and part-time lecturer of memory institutions in University of Tartu, in Institute of Social Sciences. Having background in ethnology (MA in Turku University, Finland) and cultural studies she has worked in museum field from 2004 (in Estonian National Museum and in Sami museum Siida, Finland) in different departments from exhibitions, research and communication. She is also PhD student of the Institute of Journalism and Communication in the University of Tartu. Her research interests and recent publications focuses on the audience studies and the participatory influence to museums and visitors. She has been analysing participatory actions in Estonian museums and conducting case study interventions in Estonian National Museum. Currently, she is participating as a researcher also in following research projects: Changing cultural dispositions of Estonians through the four decades: from the 1970s to the present time and Developing Museum Communication in the 21st century Information Environment. Her museum exhibitions and research projects also deal with Estonian everyday life from 1980s to nowadays.

Ralf Čeplak Mencin, MSc (Slovenia)



Curator, museum counselor, Slovene Ethnographic Museum, Slovenia.

E: ralf.ceplak@etno-muzej.si

I was born in 1955 in Ljubljana, Slovenia where I graduated Ethnology (Cultural Anthropology) and Psychology (B.A.) in 1981 at the Faculty of Arts / University of Ljubljana. 31 years of work as a curator in different museums (provincial, city, ethnographic) in Slovenia. Eleven years head of Ethnographic Museum in Goričane castle Medvode near Ljubljana. Since 1990 I'm employed in the Slovene Ethnographic Museum. My research work is focused in the field of Sinology, Tibetology and Museology. I was two mandates chair of Museum Association of Slovenia (1991 - 1995), two mandates chair of ICOM Slovenia National Committee (1997- 2003). Member of the board of ICOM/ ICME/International Committee of Ethnographic Museums (1989-1992 and 2007-2010) and ICOM-Europe (2002-2007), member of the ICOM Task Force on National Committees and Regional Organizations (2005-2007). I published 180 professional and scientific articles and three books, was co-author of the Museums Guide in Slovenia (1992) and organised (was author or co-author) 35 museum exhibitions. I won two times the state professional Valvasor museum award (2006, 2011). I had numerous lectures in Slovenia and abroad (Austria, China, Croatia, France, Germany, Hungary, Peru, Romania), member of Slovene Museum Society. I finished my MSc (Master of Science) in Museum studies in Zagreb/Croatia with the theme »Festivals as an alternative communication model in museums« in December 2011. From 2012 – 2015 I was editor of the scientific journal of the Slovene Ethnographic Museum »Etnolog«. In 2015 I curated the exhibition »Migrations«. Recently I'm working on an ethnographic exhibition »Afghanistan – the Slovene views«. The opening should be in 2017.

Esther Chipashu (Zimbabwe)



Curator of Ethnography, National Museums and Monuments of Zimbabwe.

E: echipashu@gmail.com

Esther Chipashu is a Curator of Ethnography with National Museums and Monuments of Zimbabwe, stationed at the Zimbabwe Museum of Human Sciences which is located in Harare, the country's capital city. Esther is a holder of a Bachelor of Arts Honours in History from the University of Zimbabwe and a Master of Arts in Heritage Studies (MA) from the same University (University of Zimbabwe). Working in the museum, she became passionate about researching, promoting, preservation and conservation of diverse cultures and heritages across the globe. This has seen her attending numerous international cultural exchange programs and conferences in different parts of the world. Being a young African woman passionate about cultures and having witnessed a lot through participating in various programs, Esther learnt that despite housing greater aspects of both intangible and tangible ethnographic heritage, most African museums are not aware of ICME. Because of this realization Esther intends to raise more awareness among Africans, including those in remote communities, about the role they can play in ICME.

Sarah Gamaire (France/New Zealand)



PhD candidate, Auckland University, New Zealand and France.
E: gamaire.sarah@gmail.com

Determined to make my passion my profession, I hold a research master in social anthropology and a professional master in museology. For six years, I had the opportunity to work in each department of a museum. For example I worked as an assistant curator in France, Switzerland (*Musée d'ethnographie de Neuchâtel*) and as a guide in Australia. Lately, I was Director of an ecomuseum in French Guiana where I trained young museum professionals. I also participated to produce the permanent exhibition program of the coming *Maison des Mémoires et des Cultures de la Guyane*. I am experienced with ethnographic museums issues. For instance, I assisted curators to write the renewed permanent exhibition plan of the New *Musée de l'Homme* (Paris).. I wrote a research work on current overhauls in ethnography museums and on collaboration between researchers and exhibition designers. I was also lecturer for the European research project MeLa (Museums at an age of Migration) during a year. I always try to give the best of myself for preserving and sharing our ethnographic heritage. I am starting my PhD at the University of Auckland (New Zealand) about intangible heritage, migration and identity.

Tone Cecilie Simensen Karlgård (Norway)



Museums lecturer/diversity curator, Museum of Cultural History, University of Oslo, Norway.
E: t.c.s.karlgard@khm.uio.no

As a social anthropologist I appreciate the professional areas of ICME's work and the important and inspiring exchange of ideas and experiences that takes place within this professional group. One ICME project I will engage in is Africa Accessioned: Collections Make Connections across Cultural Landscapes, as I am already engaged in related projects in professional position. However I experience the present activities of ICME as very positive. The focus on cooperation with audiences, participation and museums as arenas for intercultural dialogue and understanding are aspects I strongly support as important parts of the museum's role. In the present situation with great mobility and migrations especially to Europe I will also be interested in working more intensely with these issues and look into the museums role as safe meeting places for exchange of knowledge and mutual understanding our pluralistic world. As such I will support the work for keeping up and strengthening ICME's role as a group for continuous exchange of experiences and annual conferences as inspirational meeting places for international communication in our field. I will work to involve more active members from the Asia, Africa and South America in the work of ICME. Although I see ICME as a good-sized committee and I will like to see a continuous balanced number of members.

Ms Keiko Kuroiwa (Japan)



Director at Learning Innovation Network; Part-time lecturer at Kwansei Gakuin University, Japan.
E: kuroiwa523@gmail.com

Ms. Keiko Kuroiwa is the Director at Learning Innovation Network in Osaka, Japan, and a part-time lecturer of Museology at several universities such as Kwansei Gakuin University. She has worked in the field of museums and galleries for more than twenty years as a curator, educator and consultant, and gained a wide variety of experience internationally: in Japan, UK, USA, Jordan and Egypt since 1990. Her main research interest is in the creative potential and the social role of museums. She now helps various museums to create learning environments, working from their unique resources including ethnographic collections worldwide, both tangible and intangible, for the benefit of diverse audiences. She also serves as a member of the board of directors of the Japan Museum Management Academy, and as a committee member of the Museological Society of Japan. She obtained MA in Museum Studies from the University of Leicester and MA in Art Education from the Graduate School of Kobe University. Recent publication: Museum Education (2015) Co-writer.

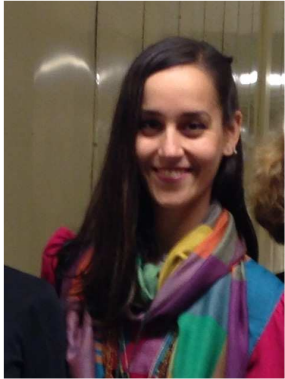
Dr. Graeme Were (Australia)



School of Social Science, University of Queensland, Australia.
E: g.were@uq.edu.au

Graeme Were is Associate Professor in Anthropology and Museum Studies and directs the Museum Studies postgraduate programme in the School of Social Science at the University of Queensland (UQ). He has held positions at University College London, Goldsmiths College London, and the British Museum and joined UQ in 2011. His research interests include museum anthropology, digital heritage and material culture studies and he has a regional specialism in Papua New Guinea and Vietnam. His recent work includes Lines that connect: rethinking pattern and mind in the Pacific (University of Hawai'i Press, 2010) and (coedited with J.C.H. King) Extreme collecting (Berghahn, 2012). He presented the prestigious 2011 Curl Lecture at the British Museum awarded by the Royal Anthropological Institute, and in 2012, he received a UQ Foundation Research Excellence Award for his work on digital heritage and knowledge networks in Melanesia. He serves on the Australian government's National Cultural Heritage Committee.

Brittany Lauren Wheeler (USA)



PhD candidate, Clark University, Boston, MA.
E: brittany.lauren.wheeler@gmail.com

Brittany Wheeler holds degrees in International Museum Studies (M.A. University of Gothenburg, Sweden) and Forced Migration Studies (M.A. University of the Witwatersrand, South Africa), and began her PhD in Geography at Clark University in the autumn of 2016. Brittany was the Repatriation Specialist at The Field Museum of Natural History from 2011-2016, where she researched domestic and international repatriation requests, consulted with indigenous visitors and requestors, and performed collections management related to the care of and access to cultural items. She has also worked to create the Emerging Scholars and Practitioners on Migration Issues (ESPMI) Network, leading the production of their peer reviewed e-journal Refugee Review. She has attended and presented at a number of museum conferences and events dealing with themes such as migration and diaspora, collecting and contemporary reengagement, disciplinary crossroads, and foreign policy and power. She is particularly interested in the study of human mobility and (dis)possession as revealed by material culture, and in institutional responsibility, continued knowledge production on collections, and issues of access, ownership, and intellectual property. She appreciates critical conversations around these topics on an international scale with peers who are working within varied ethnographic museums, each with their own history and institutional legacy that speaks to past and present geographies of encounter and collaboration.

Kiwon Yi (Korea)



Vice Head, National Folk Museum of Korea.
E: hope0921@korea.kr

I studied Linguistics and Folklore in Master course at the New York University, USA and Korea University. Current post is Deputy Head of Cultural Exchange and Museum Education Division at the National Folk Museum of Korea where I have been working for 20 years and dealing with international exchanges with overseas museums including organizing international conferences such as 'Learning Innovation'. 'Museums and Intangible Heritage', and COMCOL(International Committee for Collecting)/ICOM Annual conference in 2015 and curatorship program for foreign curators and publishing international journal "Intangible, which is indexed by the Arts and Humanities Citation Index(A&HCI), Scopus, the Modern Language Association International Bibliography(MLAIB) and the Korean Citation Index(KCI). Research interest is folklore, museum studies, intangible heritage. I wrote papers in "The Effectiveness of Museum Educational Programs" in 2002, " A Study on Korean Stilt", in 2006 "A study on Educational programs of the Victoria and Albert Museum in 2010.
